



PHONE
301.908.8091

FAX
866.908.8313

MAILING ADDRESS
 11200 Rockville Pike, Suite 150
 Rockville, MD 20852

LOCATIONS
Rockville
 11200 Rockville Pike, Suite 150
 Rockville, MD 20852

Fairfax
 8316 Arlington Blvd., Suite 235
 Fairfax, VA 22031

revisionrubinfeld.com

“Death of Kmax” Part 2: Postop Visits, Expectations

For patients who were diagnosed and referred early **before** they lost vision, they need only corneal strengthening (advanced CXL) to prevent future vision loss. Their postop care is extremely simple.

Postop Care for Patients [without CK treatment](#):

Return to work/school in 1-2 days (avoid swimming for 1 week). These patients do not need to see us until ~12 months postop. It’s OK to restart their usual contact lenses after 1-3 days.

As a reminder, postop management of investigational [Epithelium-On CXL](#) has been shown to be **very different** from [Epi-Off CXL](#).

	Epithelium-On <i>CXL-005 data</i>	Epithelium-Off <i>Hersh data</i>
Return to School/Work	1-2 days	1-2 weeks
Vision Recovery	1-2 days	3-10 weeks
Second Eye Timing	simultaneous bilateral	3 months
Pain	4-6 hours; Tylenol	4-8 days; opioids
Eye Irritation	1-2 days	weeks to months
Light Sensitivity	1-3 days	1-4 weeks
Eye Drops	4 days	2-3 months

[Epithelium-on](#) vs. [Epithelium-off](#) Recovery [Results](#)

This Report Describes Treatments That Are Not FDA-Approved

For patients who have already lost vision from their disease before referral, we have had good success combining Epithelium-On CXL with CK corneal reshaping. In advanced cases, the average [improvement in vision was 2-3 lines](#). These patients have different recovery.

Postop Schedule for CK + Epithelium-On CXL patients: Worse Disease=More Surgery=Slower Recovery

- Expectations are key. This is NOT LASIK. Patients need to understand that their spectacle prescription and vision will be changing as they heal and that at around 3 months a new glasses prescription from us will improve their vision.
- Rapid prescription changes occur in the first several weeks and months and light sensitivity after CK+Epithelium-On usually lasts for months.

Visit Schedule for CK+Epithelium-On Patients:

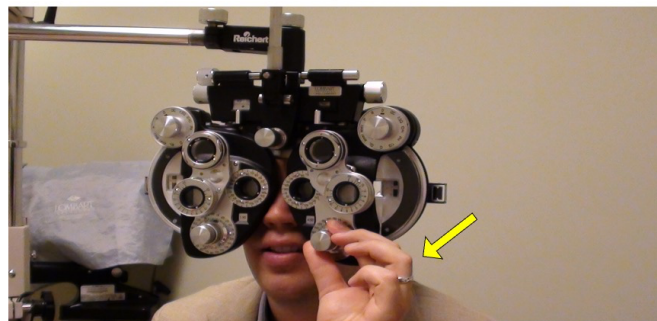
- Day 1: CK corneal reshaping to restore some of the lost vision.
- Day 2: Epithelium-On CXL (generally both eyes)
- Day 3-4: Return to normal activities (no swimming for 1 wk)
- Day 4: Try previous contact lenses, increasing wear time as tolerated.
- Approximately 3 Months: We will examine and provide a new spectacle prescription and report back to referring doctor. Patient can follow up with their referring doctor for new CLs and regular care.
- 6-12 Months: Brief visit in our office for vision and glasses check.

Tips for Glasses after CK+Epithelium-On CXL- It's Different:

Critical to Have Patients

Find Their Axes

(Compromise Between VA and Ghosting)
Give them time, blink, and often you'll be surprised

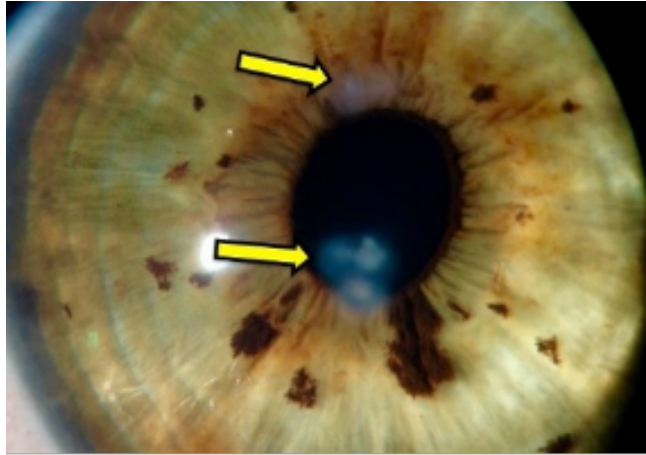


RE VISION
ROY RUBINFELD MD

This Report Describes Treatments That Are Not FDA-Approved

What are these White Spots on the Cornea?

These are CK spots used to improve vision in patients who lost vision from advanced disease. They don't interfere with vision and fade with time.



Finally, please CALL US With QUESTIONS at 301.908.8091. You can also reach Jenny, our practice manager, by call or text at 240-204-4442 or email at jenny@revisedeye.com

Our practice is limited to advanced treatment of Keratoconus and Ectasia and LASIK or PRK with convenient locations in VA and MD.



Warmest Regards.
Roy Rubinfeld, MD, MA

www.revisionrubinfeld.com

*Telltale Signs for Referral:

- Rapidly changing astigmatism, “scissoring” on retinoscopy
- Unable to achieve good vision without other obvious reason
- Family History of keratoconus
- Chronic eye rubbing
- Multiple glasses that “haven’t worked”.
- Referring for a complimentary consultation could save their sight.

This Report Describes Treatments That Are Not FDA-Approved